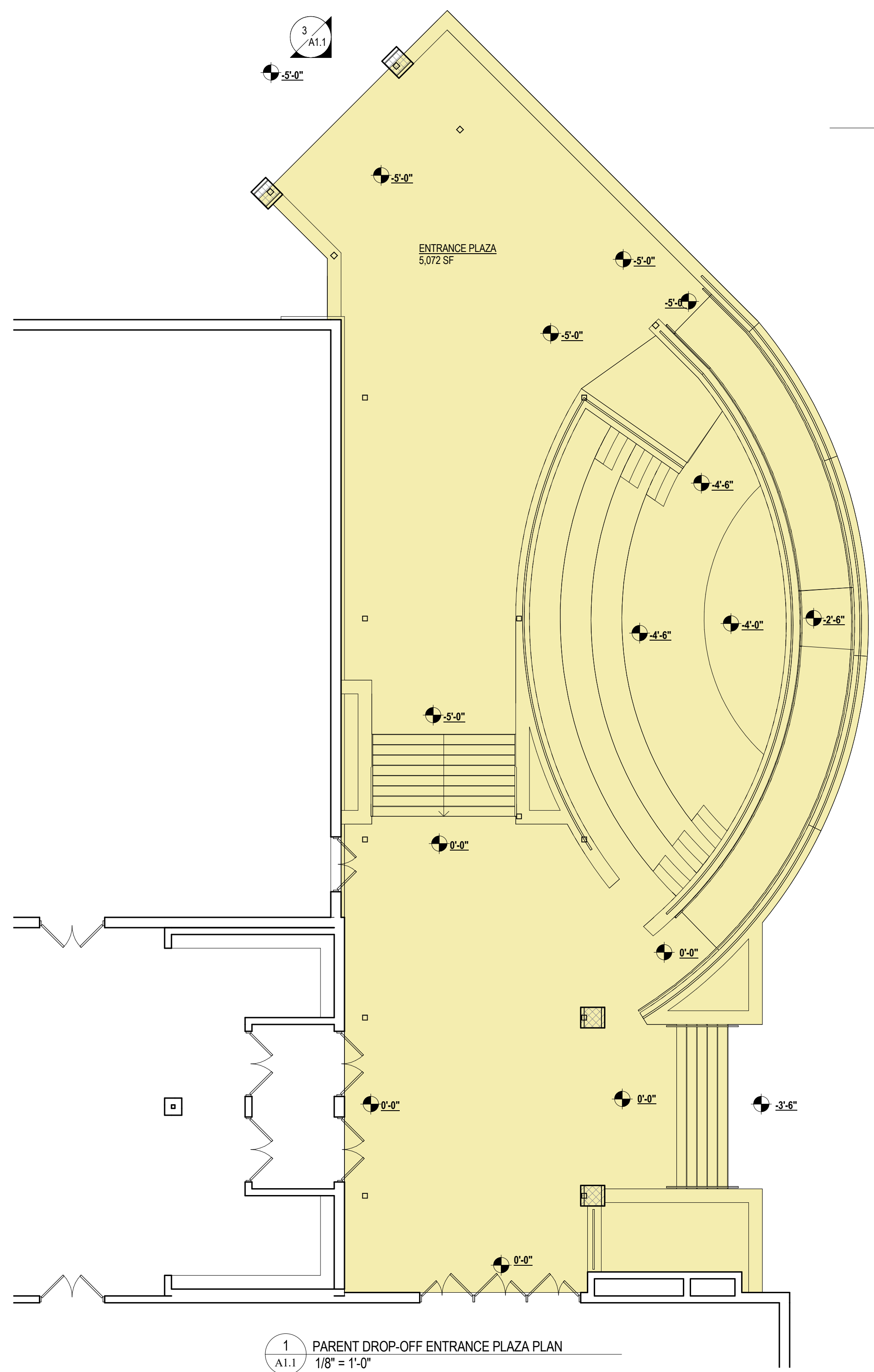


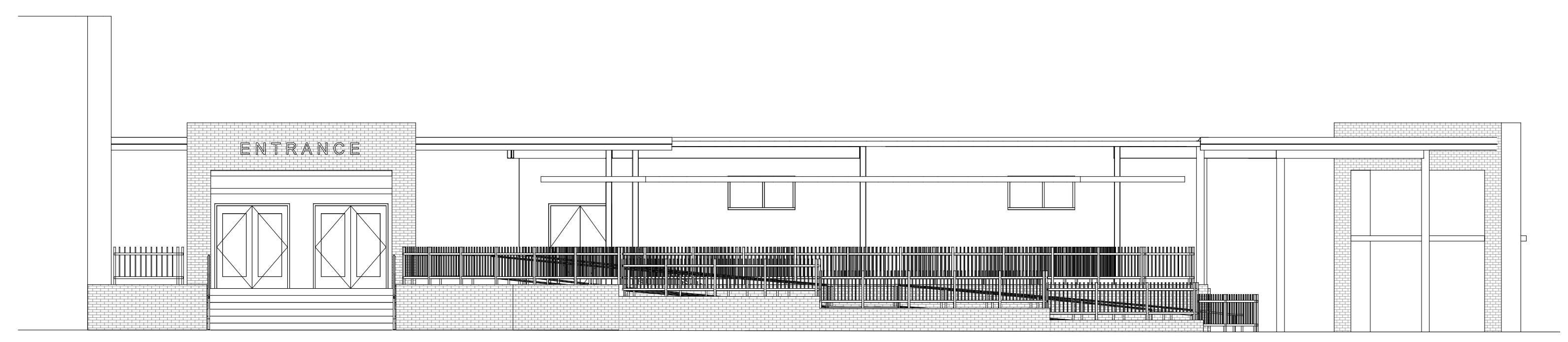
ALL REPORTS, PLANS, SPECIFICATIONS AND COMPUTER FILES RELATING TO THIS PROJECT ARE THE PROPERTY OF CRABTREE, ROHRBAUGH & ASSOCIATES. CRABTREE ROHRBAUGH & ASSOCIATES RETAINS ALL COMMON LAW, STATUTE AND OTHER RESERVED RIGHTS INCLUDING THE COPYRIGHT THEREIN. REPRODUCTION OF THE MATERIAL HEREIN OR SUBSTANTIAL USE WITHOUT WRITTEN PERMISSION OF CRABTREE, ROHRBAUGH & ASSOCIATES VIOLATES THE COPYRIGHT LAWS OF THE UNITED STATES AND WILL BE SUBJECT TO LEGAL PROSECUTION. © CRABTREE, ROHRBAUGH & ASSOCIATES, INC 2017

**REVISIONS**

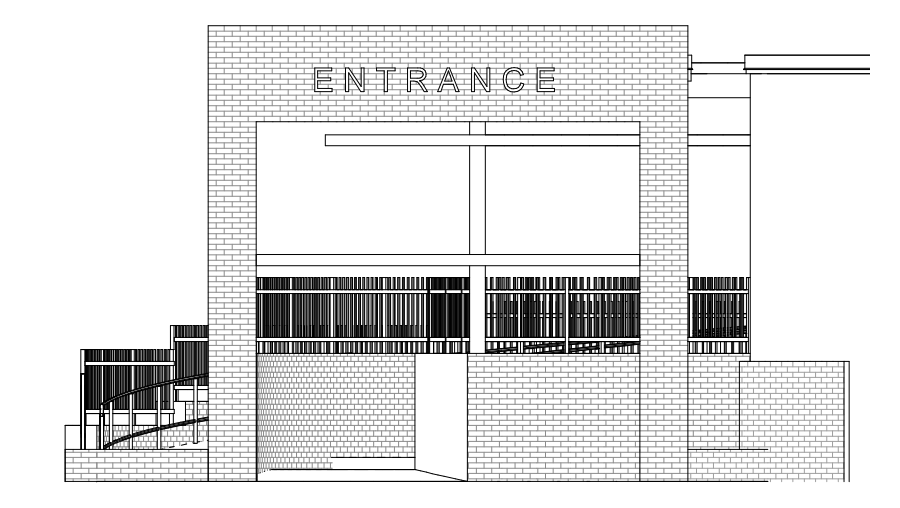
NO.	MM-DD-YR	NAME	DESCRIPTION OF CHANGES



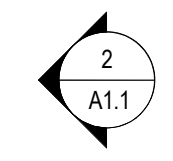
1 PARENT DROP-OFF ENTRANCE PLAZA PLAN  
A1.1  
1/8" = 1'-0"



2 EXTERIOR ELEVATION  
A1.1  
1/8" = 1'-0"



3 EXTERIOR ELEVATION  
A1.1  
1/8" = 1'-0"



**CRABTREE ROHRBAUGH & ASSOCIATES - ARCHITECTS**  
 401 EAST WINDING HILL ROAD  
 717-458-0272 FAX 717-458-0047  
[www.cra-architects.com](http://www.cra-architects.com)



PLAN & ELEVATION  
 PLOT SCALE:  
 1/8" = 1'-0"  
 FILENAME:  
 DATE: DECEMBER 27, 2017

PARENT DROP-OFF ENTRANCE PLAZA  
 ELMWOOD ELEMENTARY SCHOOL  
 MECHANICSBURG AREA SCHOOL DISTRICT  
 100 EAST ELMWOOD AVENUE, MECHANICSBURG PA 17055

**PROJECT**  
 3085-1  
**A1.1**